

Explosion Proof Manual Call Points

Series MCP



www.stahl.de



13915E00

- > Light weight glass reinforced polyester (GRP) Ex d enclosure
- > Weather resistant high performance red paint finish as standard
- > Break glass version supplied with test key
- > Push button version supplied with reset key and protection flap
- > Optional extras include stainless steel lift flap, duty and tag labels



H4

Yodalex range
Manual call points designed for use in hazardous or harsh environments

	ATEX / IECEx / GOST					
Zone	0	1	2	20	21	22
For use in		x	x		x	x

Explosion Protection

Global (IECEx)

Gas explosion protection	Ex d IIC T6 (Ta -55°C to +70°C) Gb
Dust explosion protection	Ex tb IIIC T85°C Db IP66 A21

Europe (ATEX)

Gas explosion protection	⊕ II 2G Ex d IIC T6 (Ta -55°C to +70°C) Gb
Dust explosion protection	⊕ II 2D Ex tb IIIC T85°C Db IP66 A21

Certificates and approvals

IECEx	IECEx BAS 08.0089
Europe (ATEX)	Baseefa08ATEX0269X
Certificates	IECEx, ATEX, Brazil (INMETRO), Russia (GOST-R)

WebCode MCPA

Explosion Proof Manual Call Points

Series MCP



Versions



14716E00

Break Glass (BG)



04035E00

Push Button (PB)

Selection Table

Version	Version	Enclosure colour	Order number	Art. no.	Weight kg
MCP Manual Call Points, ATEX certification, standard devices	Break Glass (BG)	red normal (R)	MCP/BG/SP/Ex/A+B+C+D/EU/R	205324	1.000
	Push Button (PB)	red normal (R)	MCP/PB/SP/Ex/A+B+C+D/EU/R	205334	1.000
MCP Manual Call Points, IECEX certification, standard devices	Break Glass (BG)	red normal (R)	MCP/BG/SP/EX/A+B+C+D/IN/R	212400	1.000
	Push Button (PB)	red normal (R)	MCP/PB/SP/EX/A+B+C+D/IN/R	212401	1.000
MCP Manual Call Points, GOST R certification, standard devices	Break Glass (BG)	red normal (R)	MCP/BG/SP/EX/A+B+C+D/RU/R	212402	1.000
	Push Button (PB)	red normal (R)	MCP/PB/SP/EX/A+B+C+D/RU/R	206660	1.000

Note

Accessories, variations and different unit colours are available, to order these please use the table below

position of
cable entries



13952E00

Break glass call point



13951E00

Push button call point

Cable entries

4 cable entries, supplied with (3x) stopping plugs and (1x) dust cap

Contacts

standard: 1 change-over contact
optional: 2 change-over contacts

LED

optional: LED-status indication (up to 24 V DC)

Resistors

various resistance values on request

Enclosure colours

additional colours on request

Explosion Proof Manual Call Points

Series MCP



Type Code

Variations		MCP / - / - / - / - / - / - / - / - / - / - / - / - / -
Version	break glass	BG
	push button	PB
Contacts	1 change over	SP
	2 change over	DP
Explosion protection	standard	Ex
Cable entries	standard 4 x M20 with 3 x stopping plugs and 1 x dust cap glands to be ordered separately	A+B+C+D
Certification	ATEX	EU
	IECEX	IN
	GOST R	RU
Colour	red	R
	blue	B
	green	G
	yellow	Y
Accessories	lift flap (break glass only)	LF
	end of line resistor	EOL
	inline resistor	IL
	end of line and Inline resistor	ILEOL
	LED signal	LED
Labels (please specify wording)	duty label	D
	tag label	T

H4

Explosion Proof Manual Call Points

Series MCP



Technical Data

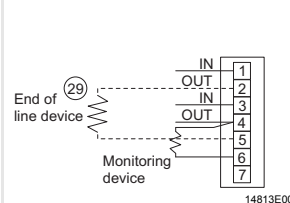
Electrical data

Rated operational voltage	12 ... 50 V DC, 12 ... 250 V AC	
Switching capacity	DC	12 ... 30 V 5 A resistive or 3 A inductive
		30 ... 50 V 1 A resistive or inductive
	AC	12 ... 250 V 5 A resistive or inductive

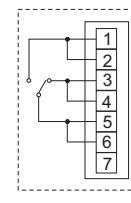
Contact element
 standard: 1 change-over contact
 optional: 2 change-over contacts

Schematic

Normally open with series monitoring



Internal switch connections armed

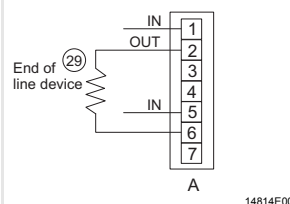


The call point is supplied in two versions: supplied with or without a monitoring resistor. The version with the monitoring resistor should be connected as shown above. Check panel instructions to ensure the correct value resistor is fitted.

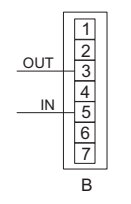
If not required, remove and connect as shown in 'A' or 'B'

Ratings: Vac: 250 V max. / 12 V min. Imax: 5 A resistive. Vdc: 30 V max. / 12 V min.
 Contact resistance: 50 milliohms max.
 Conductor size: 2.5 sq.mm max. per terminal.

Normally open



Normally closed



When supplied without the monitoring resistor the call point should be connected as shown in 'A' or 'B' above.

Legend

29 = Optional end of line resistor

Ambient conditions

Ambient temperature	- 55 ... + 70 °C
Max. relative humidity	95 % at 40 °C



Mechanical data

Enclosure material	glass fibre reinforced polyester (GRP)
Colour	red
Degree of protection	IP66
Cable entries	4 cable entries, supplied with (3x) stopping plugs and (1x) dust cap
Connection	
Terminals	6 way terminal block., 4 mm ²
Earth connection	provided as standard

Assembly / Installation

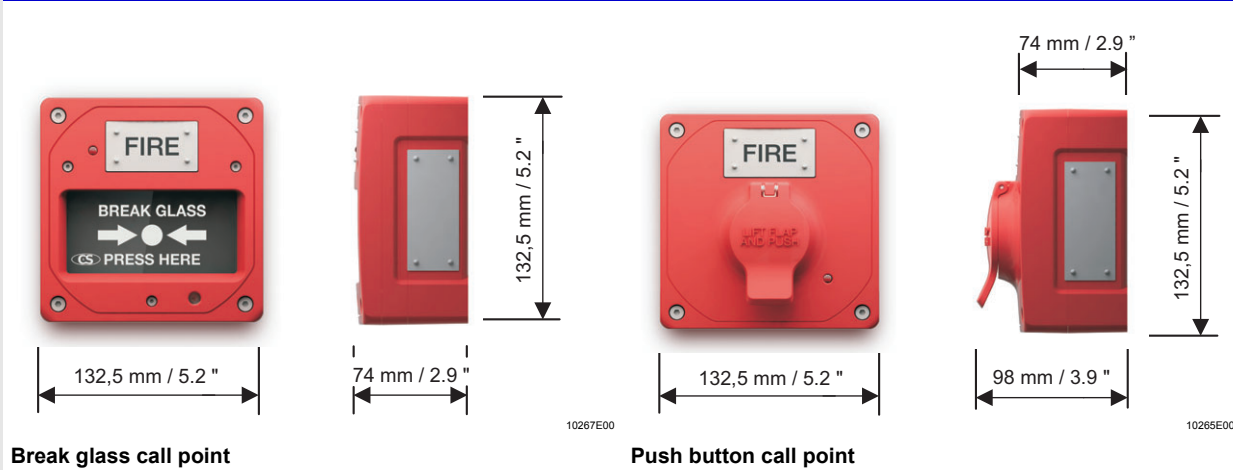
Assembly	via holes through the back box
----------	--------------------------------

Accessories and Spare Parts

Designation	Illustration	Description	Group	Order number	Art. no.	WebCode
Cable gland		Compound Barrier Cable Glands Ex d and Ex e for all Types of Unarmoured Cables	IIB + H ₂ and IIC	8163 / 2-20-PXSS2K-M20	138888	8163J
		Compound Barrier Cable Glands Ex d and Ex e for all Types of Armoured Cables	IIB + H ₂ and IIC	8163 / 2-20-PX2K-M20	138875	8163I

Note Approvals of cable entries have to be observed.

Dimensional Drawings (All Dimensions in mm / inches) - Subject to Alterations



Break glass call point

Push button call point

We reserve the right to make alterations to the technical data, dimensions, weights, designs and products available without notice. The illustrations cannot be considered binding.