

Product Overview Brochure



MORLEY  **IAS**

FIRE SYSTEMS

by Honeywell



Contents



- 03** Morley-IAS by Honeywell Overview
- 04-05** Non-Addressable Range
 - Horizon Panel Range
 - Devices
- 06-07** Addressable Panels
 - DX Connexion Range
 - ZX Range
- 08-09** Addressable System Components
 - Detectors
 - Audible Visual Alarms
- 10** Fire Paging Systems
- 11** Aspirating Smoke Detection
- 12** Fire System Graphics Package
- 13** Voice Alarm Solutions
- 14** Emergency Voice Communication System
- 15** Emergency Assist Alarm Kit
- 16-17** Ancillary Products
- 18** Additional Services
- 19** Contacts

Morley-IAS by Honeywell Overview

Why Choose Morley-IAS by Honeywell?

Morley-IAS by Honeywell has a well established reputation for quality products with first-class support. The wide range of products from Morley-IAS allows you the freedom to design a system that best suits your needs with the option to create, add and enhance, whenever and however you wish. Our extensive network of trained distributors and installers gives building owners and managers the freedom to choose where to purchase the equipment the installer and/or maintenance provider that best meets their requirements.

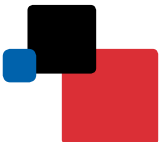
Our ethos is to supply quality products approved to meet local legislation. In the UK, all of our fire detection and alarm control panels are independently tested and certified by LPCB to ensure compliance with EN54 Part 2 and Part 4. Additionally a three year warranty provides customers with the necessary peace of mind. The carefully planned evolution of our products over many years ensures that a system purchased yesterday meets the needs of today and can easily grow to satisfy the requirements of tomorrow.

Dedicated to you

Morley-IAS customer service starts in the field with our sales team. All of our Business Managers are fire sales professionals with many years of fire industry experience. They are experts in our product range and understand the market in which their customers are operating.

Our internal customer support teams are on hand to provide you with the level of service that you would expect, these include:

- Customer Services; responsible for order processing, delivery and providing you with stock availability.
- Training courses via dedicated and knowledgeable staff across three UK sites.
- Technical support with comprehensive practical advice on your everyday queries; designed to ensure your never alone on site.



Non Addressable Range

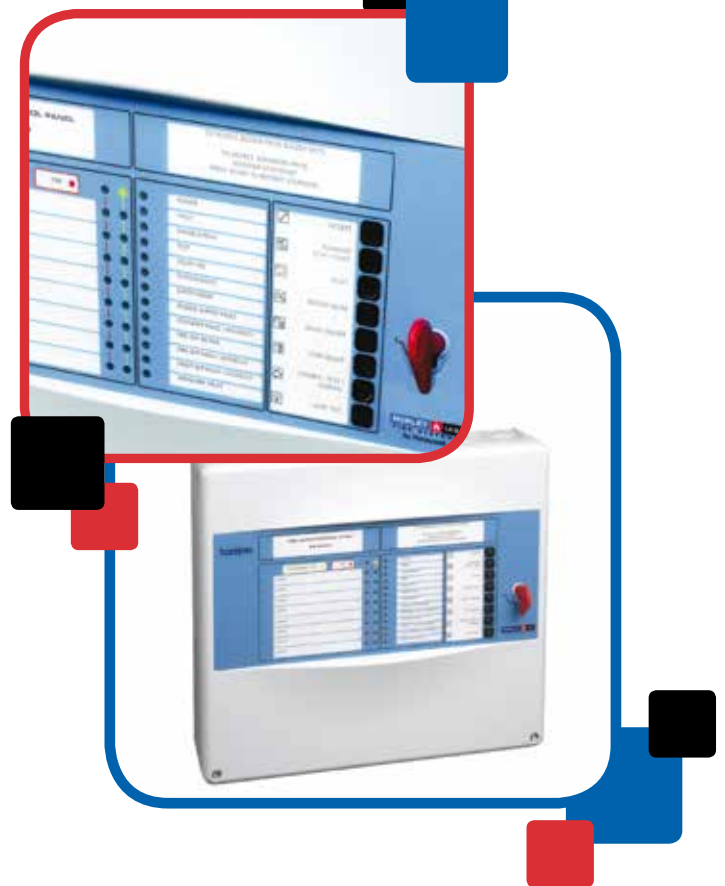
Horizon Panel Range

Control panels available in 2, 4 or 8 Zones

The Horizon 2, 4 and 8 series of non-addressable control panels is designed for use in small buildings allowing installers to meet the demands of end users quickly and easily.

Key Features

- Simple user-friendly design
- Enhanced feature set and advanced programming to meet the demands of the building manager
- Clear, visible indications with easy to operate functions
- Unique keyswitch to enable controls
- Control buttons are simple and unambiguous, ensuring easy operation
- Facility to interface to larger landlord alarm systems



Devices

The Vision range of non addressable devices combine all of the advantages of advanced technology found in 'best in class' addressable products with the ease of use and cost effectiveness of a conventional system.

The low profile, unobtrusive design blends in with both traditional and modern premises, enabling them to be installed in any location.

EN54-5 and 7 Compliant Detection

Vision detection range provides low profile, unobtrusive design which blends in with both traditional and modern premises, enabling them to be installed in any location.

Key Features

- Microprocessor based products provide a more intelligent solution
- Laser based remote test unit - no need for ladders and towers
- 8 to 30VDC operating voltage range provides compatibility with both fire and security systems
- Automatic drift compensation

Audible Visual Devices

EN54-23 Compliant Strobes

Our conventional beacons feature high output LEDs, advanced optics and an innovative lens design, providing outstanding Omni-directional light coverage at low current draw.

EN54-3 Compliant Sounders

Features a new folded horn design which provides outstanding sound output at low current draw. With its modern design, global tone set and extensive installer-friendly features, the sounder is the logical choice for specifiers, installers and distributors.

Sounder Beacons

Our Conventional Sounder Beacons are ideal for applications where a dual purpose audible and visual alarm device is required. Specifically designed and approved to meet both EN54-3 and EN54-23, the Sounder Beacon delivers outstanding quality, reliability and extended operational life.



Addressable Panels

The DX Connexion Range

Multi-Protocol, Analogue Addressable, Networkable Fire Alarm Control Panels Available with 1, 2 or 4 Loops

The Morley-IAS DX Connexion panel is ideally suitable for protecting small to medium sized buildings. A simple to use, compact, high performance, feature rich, economical fire alarm control panel designed to help both the installer and the end user.

Key Features

- Easy set-up – 5 button presses for a working fire alarm system
- Simple menu structure
- Large, easy to use display
- Networking options up to 16 loops
- Option to upload your company logo
- Robust alphanumeric keypad and navigation keys



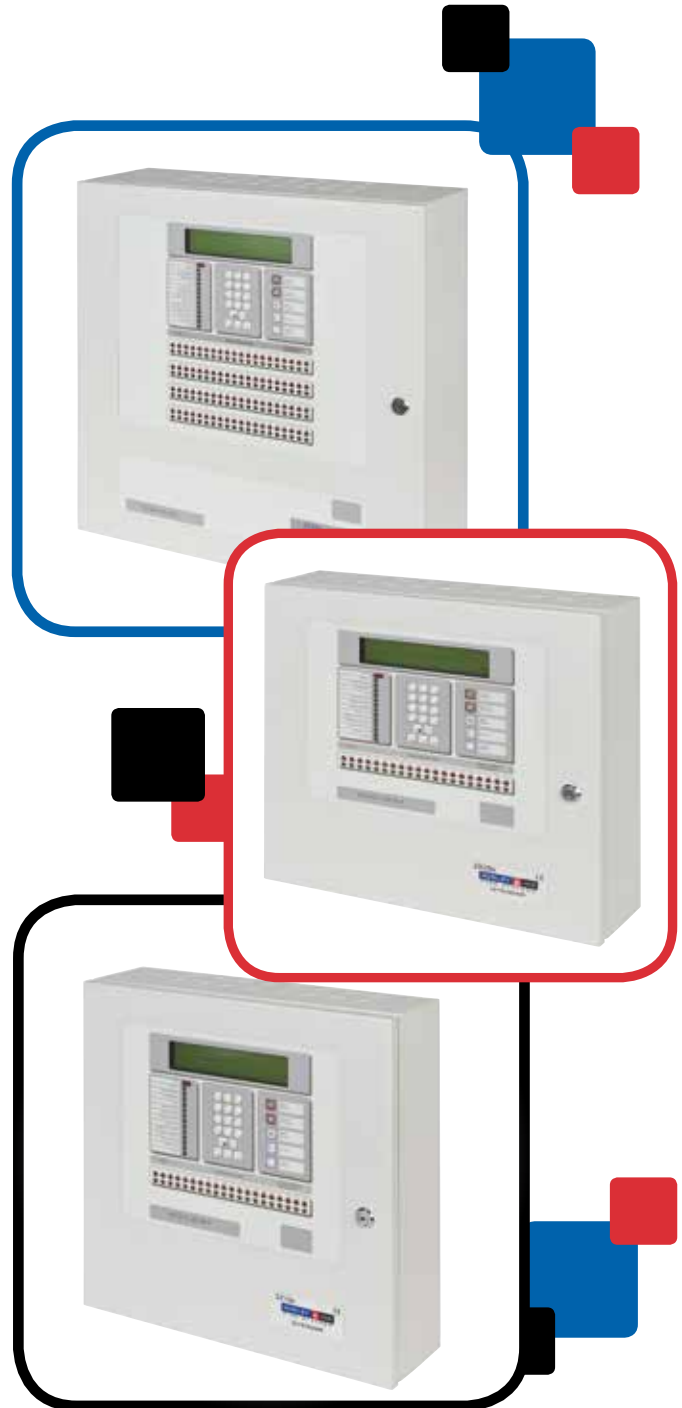
ZX Range

Multi-Protocol, Analogue Addressable, Networkable Fire Alarm Control Panels Available with 1, 2 or 5 Loops

The ZX range of 1, 2 or 5 loop modular, scalable intelligent fire alarm control panels is suitable for protecting all types of medium to large property. These panels are easy to install and maintain, making them an obvious choice for new projects and refurbishments.

Key Features

- Scalable platform which can support up to 99 panels on a single network
- Simple integration with voice alarm, public address and other systems
- Seamless support of four industry leading detection device protocols
- Easy to follow menu structure supports all standard maintenance activities
- wide range of supporting equipment, such as printers, mounting accessories and repeaters provides maximum system flexibility
- Simple programming with the off-line system configuration tool



Addressable System Components

Detectors

Morley-IAS are proud to supply a range of Analogue Addressable products from System Sensor the worlds largest supplier of fire detection equipment.

The System Sensor Analogue Addressable Detectors harnesses the power of new technology and communications protocol to create an expanded and enhanced range of products, providing wider application opportunities and performance improvements.

The range includes Photoelectric, Thermal, Photothermal, Photothermal infra red, Beam Detectors, Input and Output Modules and Call Points.



Audible Visual Alarms

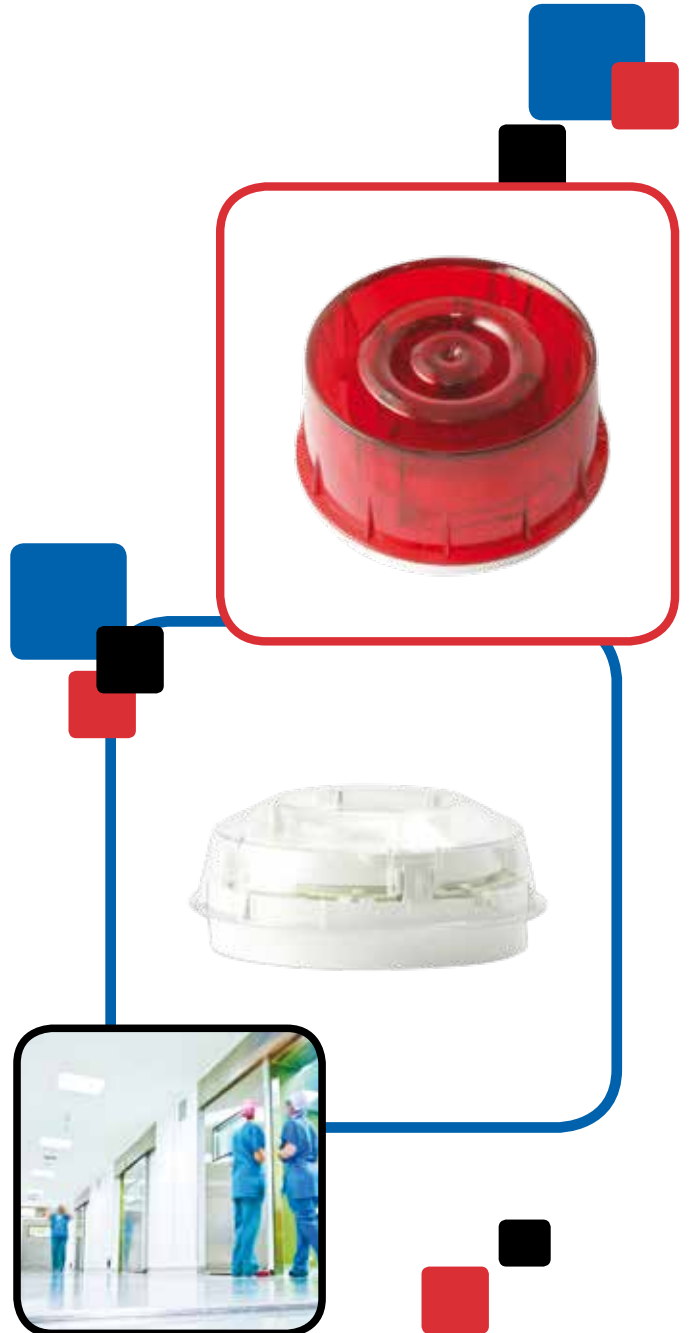
Our range of analogue addressable, loop powered, audible and visual alarm devices are designed to alert building occupants of an emergency. EN54-3 and 23 compliant these alarm devices provides a comprehensive selection of products to complete all fire alarm installation requirements.

The range is easily mounted on the one common base for improved installation flexibility making all devices - detectors, sounders and strobes alike - fully interchangeable without the need for any wiring disturbance.

Key Features

- Faster and flexible installation
- Reduced install errors and easy fault finding
- Excellent system performance
- Reduced lifecycle costs
- Reduce inventory count

Our devices provide both standard wall mounting units and integrated base units allowing the direct fitting of System sensor detectors.



Fire Paging Systems

The Response Paging system offers the latest innovations in wireless paging and monitoring. It's a cost effective and flexible system that provides the ability to quickly respond to activated alarms.

- Response Aid comes complete with a powerful transmitter and the system supports the deaf and hard of hearing in case of a fire emergency. The device is set to Equality Act 2010 recommendations sending a strong vibration to every pager together with a Alpha Numeric message alerting the user of a fire evacuation.
- Response Plus has a wide range of applications that will fit all types of industries requiring a paging network. The system comes complete with four dry volt free contacts and serial data input. The contacts can be set to normally open N/O or normally closed N/C as required. When activated these will send pre-programmed messages to a particular pager address which could be to an individual pager or group of pagers at the same time. It can also be integrated with Morley-IAS fire detection systems that immediately notifies designated fire marshals exactly where an alarm has been triggered, ensuring alarms can be identified and validated quickly, reducing time and costs associated with unnecessary evacuations.
- Response Link is an entry level paging system, it includes four dry contact alarm outputs that provide basic emergency information whilst offering the same paging capability.

We also have a range of Pagers including the wristwatch and Rechargeable variant.



Aspirating Smoke Detection

The FAAST LT Aspirating Smoke Detector is designed with the installer and end user in mind. It serves the wide variety of Class C applications where maintenance is difficult, other smoke detection methods are inappropriate or prone to fail due to harsh environments or areas where aesthetics matters. It is also suitable for smaller mission critical applications where very early warning - Class A or B detection is required.

Key Features

- Multiple event logging up to 2240 events
- Ultrasonic airflow sensing
- PipeIQ™LT software provides intuitive system layout and configuration all in one package
- User friendly air flow pendulum graph for verification of pipe network functionality
- Protected electronics from air flow and accidental damage during installation or maintenance
- Easily replaceable and reusable filter without affecting the rest of the device
- Designed for efficient wiring and installation: cable gland holes, easy access to the wiring area and no special tools required.
- Easy access to parts requiring routine maintenance: filter(s) or sensor(s)
- Single & Dual channel versions with independent channels including fan, sensor and flow monitoring
- IP65 enclosure



Fire System Graphics Package

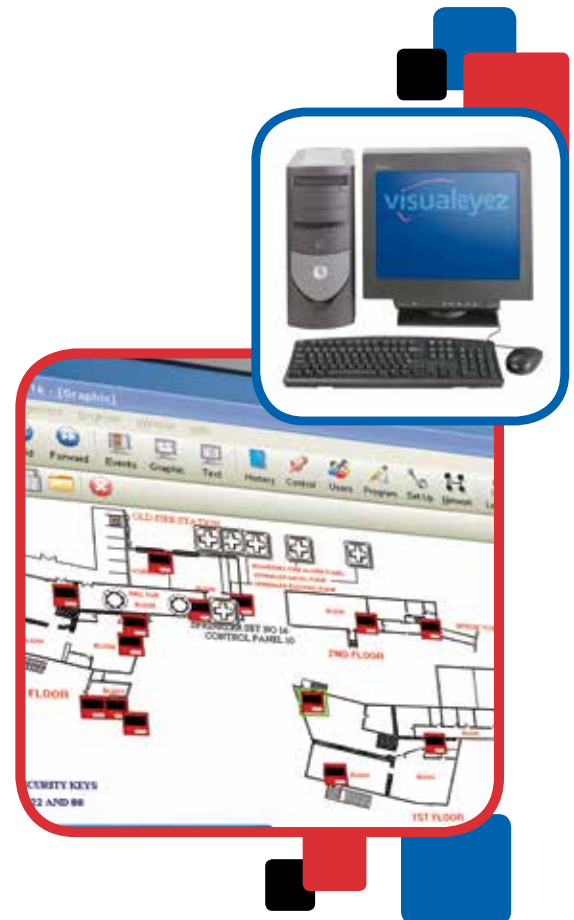
Site-wide Alarm Management System

Visualeyez is a pictorial and textual aid for managing alarm activation in large sites such as hospitals, universities, prisons, hotels and industrial or commercial buildings. Visualeyez displays information simply and clearly in graphic and/or text formats, allowing rapid comprehension of the situation.

Monitoring of remote buildings can also be achieved over TCP/IP using a Visualeyez Cube. The Visualeyez Cube is an embedded PC that interfaces with the remotely located fire alarm control panel, seamlessly and securely passing the alarm information to the main Visualeyez workstation.

Key Features

- “What has happened and where” in a clear and userfriendly way
- Management tools to effectively plan maintenance and false alarm prevention
- Graphic and/or text display giving fast understanding of the site-wide situation
- Options for multiple workstations and TCP/IP connectivity of remote sites with Visualeyez Cube
- Ability to record and analyse events showing valuable information on alarms, faults and non-fire events
- Fully monitored integration with the ZX and Connexion range of panels

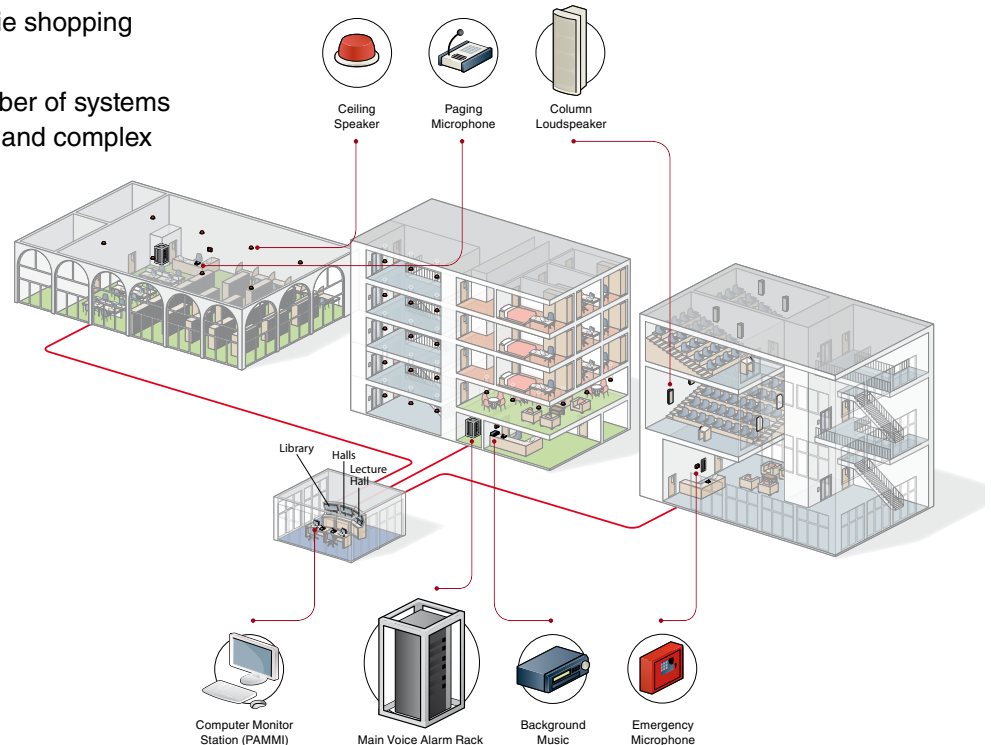
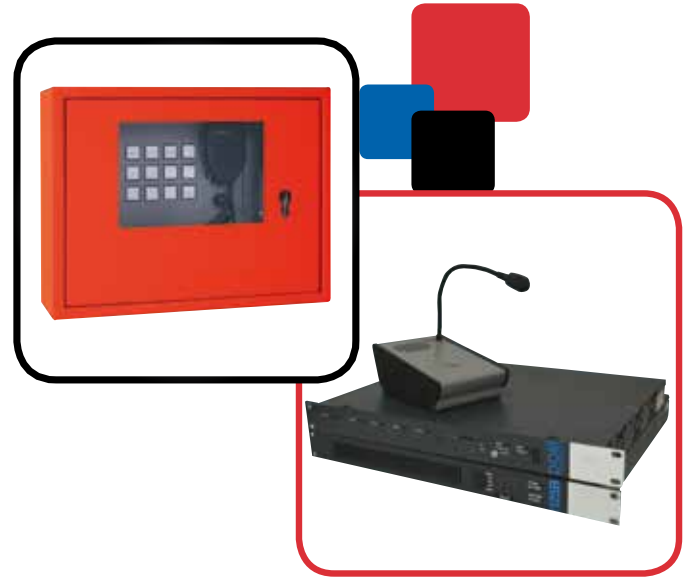


Voice Alarm Solutions

Voice Alarm is increasingly important in the safe management of buildings. A voice message informs occupants exactly what to do in an emergency and it is a long established fact that people respond more quickly and are more likely to take the correct action during an evacuation if voice messages are used instead of tone sounders.

We offer three types of Voice Alarm Solutions depending on the complexity of your building:

- 'Stand Alone' systems are suitable for small to medium building; typically single storey buildings ie shops and offices
- 'Custom Made' rack systems are more appropriate for the medium to large sites, these can be tailored to meet your specific requirements ie shopping centres and large office complexes
- 'Scalable' systems consist of a number of systems linked together for larger structures and complex sites ie Stadia and airports.



Emergency Voice Communication System

Disabled Refuge/Fire Telephone Systems

An EVC System (Emergency Voice Communication System) is a fixed, monitored and maintained, bidirectional, full duplex voice communication system to assist the orderly evacuation of disabled or mobility impaired people and enhance fire fighter's communication during emergencies.

A disabled refuge system is not just for use during a fire and must be available at all times.

Key Features

- Compliant with BS5839 Part 9
- System flexibility allows additional outstations to be added at any time
- Type A and Type B outstations for fire telephone and disabled refuge systems
- Full fault monitoring ensures no fuss maintenance and operation
- Support for multiple line conversations, the system is not limited to one outstation at a time
- Bi-directional, full-duplex voice communication system

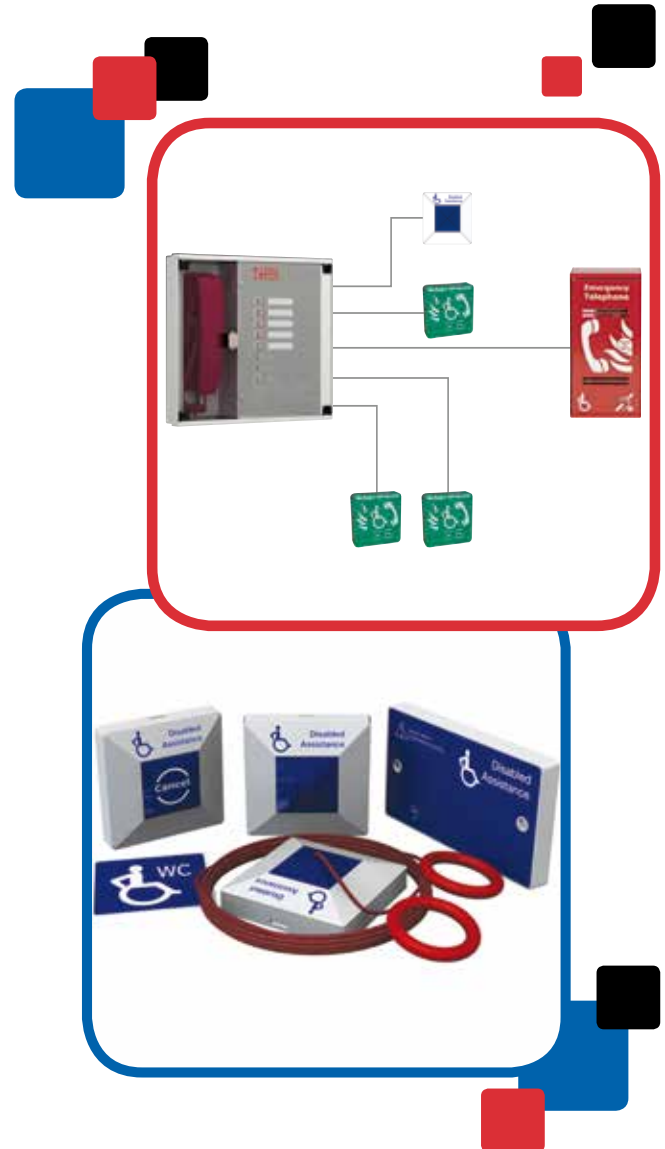


Emergency Assist Alarm Kit

This is a simple two wire system that has been specifically designed to meet the needs of disabled service users and conforms to all the relevant requirements; Disability Rights Commission code of practice, English Tourism Council Recommendations and RNIB signage guidelines. The use of combined high output blue LED indication and buzzer ensures a response to the call. The Emergency Assist Alarm Stand Alone Kit comprises of all the components needed to install a fully compliant system, with additional parts available separately.

Key Features

- Complies with regulations & recommendations
- Dual loop pull cord
- Stand Alone or Integrated into the EVC system
- High contrast labels
- Blue indication
- Quick and simple installation, with limited cabling requirements
- High contrast printing for increased visibility
- Tactile braille signage to assist partially sighted people to easily operate the cancel plate.



Ancillary Products

EN54-4 Power Supplies

Our EN54-4 range of power supplies has been specifically designed for Fire System Installations and features intelligent battery charging and monitoring with remote fault signaling.

Fire legislation in most European countries states any power supply performing a mandatory function of a fire alarm system must comply with EN54-4/A2. As such, any power supply controlling a beam detector, auto-dial communicator, Aspirating Systems, Auto-Open Ventilation System or Auxiliary Sounder System must comply with this standard.

Key features

- Full Rated Current to Load + Battery Charging
- Fully Fault Monitored
- Electronic Overload Protection
- Mains Transient Protection
- 2A & 5A models can charge up to 2 x 18Ah batteries
- 5A model can charge up to 2 x 38Ah batteries housed in a separate enclosure



Transformer Rectifiers

Our Transformer Rectifier range has been specifically designed for fire and access control applications that require remote control of the power supply output. A typical example would be to power door retainers, with a link to the fire panel in order to switch off the output to the doors in the event of a fire alarm activation. This range is not suitable for use with batteries.

Key features

- 27V dc nominal output
- Remote control of output
- Choice of switching options
- Closing of Normally Open Contact
- Application of an external 24V dc supply
- Mains Status
- Output Fuse Failure
- Mains Transient Protection
- Fail safe operation



Door Holders

Electromagnetic Fire Door Holders are designed to hold open Fire Doors in any areas where easy Disability Discrimination Act access is essential, and can be used in conjunction with any suitable fire alarm systems.

When an alarm is triggered, power to the door holder is cut, allowing the fire door fitted with its standard closing mechanism, to shut automatically. our door holders are fitted with an integral manual release button, allowing the door to be closed without operating the fire alarm. ideal for use in any public access areas including Hospitals, Offices, Hotels and Nursing Homes.

Key features

- Surface-mounted design that fits any standard back box
- Attractive, fire-resistant ABS casing
- 200N or 500N door holding force
- 24V DC or 230V AC supply voltage
- Zero residual force
- CE approved under CPD (Construction Products Directive)
- Approved to EN1155 for power size 3-6 door closers
- Supplied with adjustable keeper plate
- Integral release button



Document Box

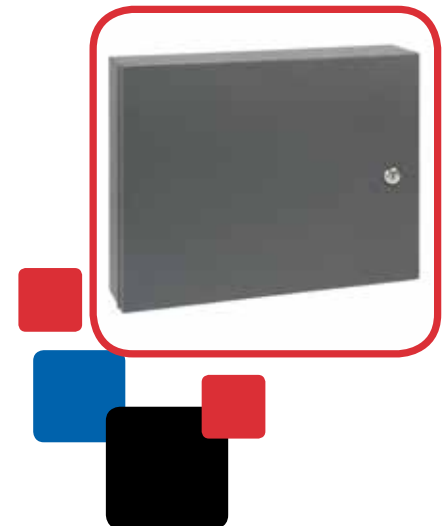
A robust, lockable steel enclosure offers safe storage and fast access to essential documentation such as that required for compliance with BS5839 pt 1. In addition it provides an ideal place for storage of keys and other documentation relating to your Fire Alarm, Voice Alarm, Disabled Refuge, Nursecall

Robust mild steel construction, powder coated to give an attractive finish (Textured Dark Grey RAL 7024)

Ideal for the storage of log books, O&M guides, manuals, drawings and certificates

6 convenient hooks for storage of keys

Lockable enclosure



Additional Services



Training

At Morley-IAS we like to ensure that all of our customers undertake training on the complete range of our fire panels they install. This approach has a number of benefits:-

From the company perspective, a trained engineer performs their duties better with comprehensive product knowledge; the customer experiences a shorter time to completion when competence is assured; and the building owner gains confidence in the system and its support.

We provide training free of charge, either at our facility in Lewes, Barnsley and in our Leicester office. Training can reduce time on site for your engineers, keep them up-to-date with the latest changes and features as well as saving your company money and time wasted. Product training is a requirement of any 3rd party accreditation which you may wish to have as an installation or maintenance company.

Fully-trained customers can also use the Morley Professional website (www.morleyprofessional.co.uk) as a resource for software updates, frequently asked questions and other technical information. All engineers with up to date training can apply for a log-in.

For more information on the courses available please contact Christine Jones or Diane Lishman on +44 (0) 1273 897207



Contacts

Sales Team

Tony Green
UK and Ireland Business Manager
+44 (0) 7836 279368
tony.green@honeywell.com

Pat McHugh
Business Manager Ireland
+353 (0) 872848405
pat.mchugh@honeywell.com

Ben Fothergill
Business Manager North and Scotland
+44 (0) 7875 999159
ben.fothergill@honeywell.com

Dennis Kershaw
Business Manager Midlands and M62 Corridor
+44 (0) 7778 155399
dennis.kershaw@honeywell.com

Shamoon Amerat
Business Manager South East
+44 (0) 7971 498212
shamoon.amerat@honeywell.com

Customer Services

Order Processing, Delivery and Stock Availability
+44 (0) 116 246 2280
ukorders@honeywell.com

Technical Support
+44 (0) 1273 897000
technical.support@morleyias.co.uk

Training

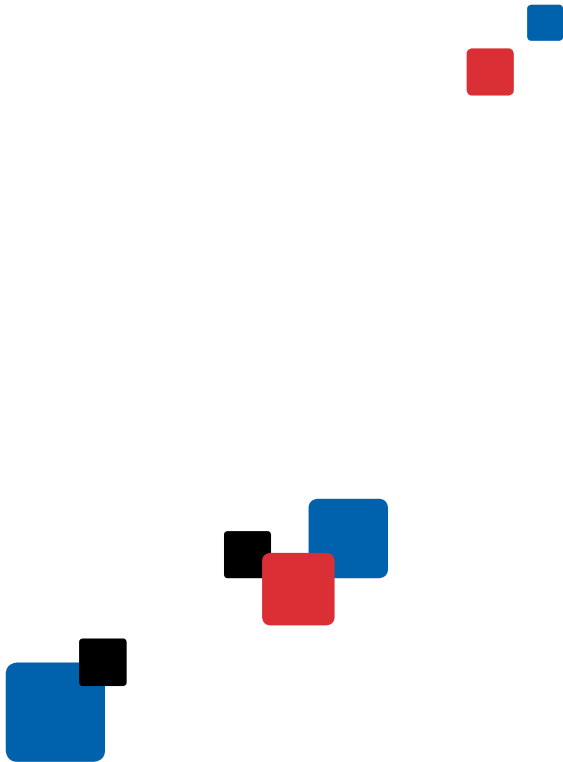
Diane Lishman / Christine Jones
Training & Sales Admin
+44 (0) 1273 897207
sales@morleyias.co.uk

Websites

www.morley-ias.co.uk
www.morleyprofessional.co.uk

Morley-IAS by Honeywell is part of Honeywell International, a diversified technology and manufacturing leader serving customers worldwide with aerospace products and services; control technologies for buildings, homes and industry; automotive products; turbochargers, and speciality materials.





For further details on these or any other Morley-IAS products please contact your local distributor, Morley-IAS Business Manager or via our contact details found below. Morley-IAS by Honeywell - Providing a control panel solution, for fire industry professionals.



Every care has been taken in the preparation of this product brochure but no liability can be accepted for the use of the information therein. Design features may be changed or amended without prior notice. © Morley-IAS by Honeywell 2014.



MORLEY  **IAS**

FIRE SYSTEMS

by Honeywell

Caburn House,
2B Brooks Road
Lewes, E. Sussex
BN7 2BY, UK

T +44 (0) 1273 897 000
F +44 (0) 1273 376 894
E sales@morleyias.co.uk
www.morley-ias.co.uk

REF: vz(0214)